

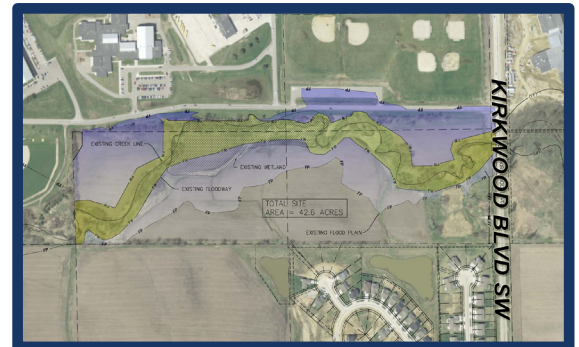
YOUTH BALL FIELDS: COLLEGE COMMUNITY SCHOOL DISTRICT CEDAR RAPIDS, IA

PROJECT SUMMARY

This heavily-traveled pedestrian corridor runs through Gibson Square, which is a coveted University of Iowa green space. The existing sidewalk needed to be widened and moved away from Burlington Street. The new Campus Recreation and Wellness Center on the south side of Burlington Street also necessitated the incorporation of features to focus pedestrian traffic toward the Madison Street intersection and discourage mid-block crossings.

The design meets these needs through strategic location of the Gibson Square fence and landscaping. The project also required relocation of the sidewalk railroad crossing and reconfiguration of a University of Iowa parking lot.

Prior to the merger with Hall & Hall Engineers, Loren Hoffman of Hoffman Design Consultants lead the design of this project.



Concept plan showing trail realignment



Plantings to provide year-round interest



Subtle incorporation of deterrent fencing to improve pedestrian safety



WWW.HALLENG.COM

WHERE EXPERTISE AND COLLABORATION BETWEEN DESIGN PROFESSIONALS COEXIST TO CREATE INNOVATIVE DESIGNS.

HALL & HALL ENGINEERS
319.362.9548